

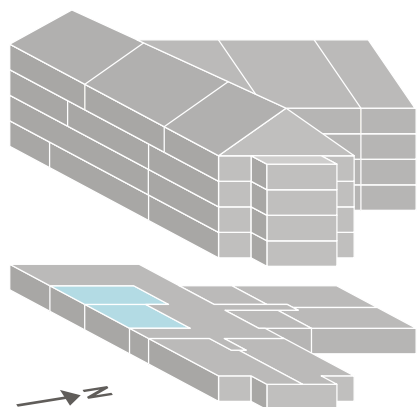
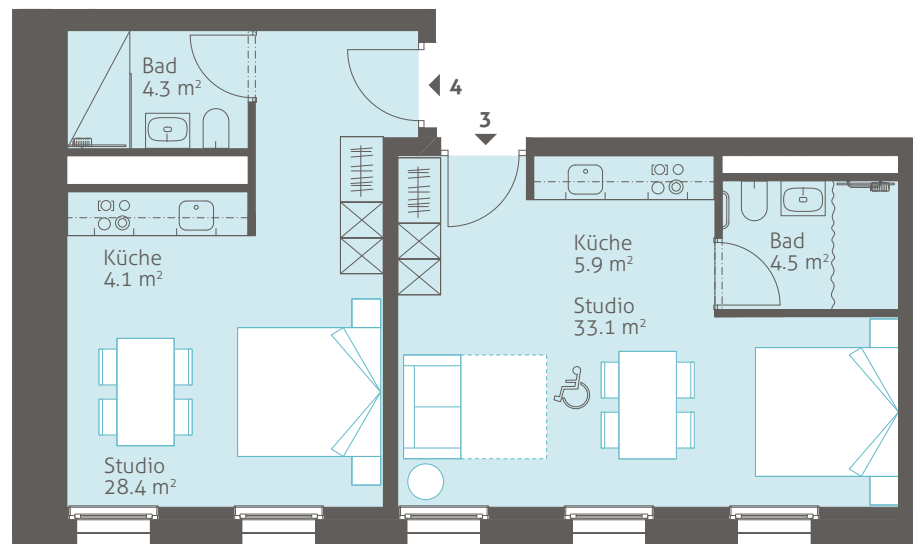
# Erdgeschoss (Aparthotel)

## 3 EINZIMMER-APARTMENT

Nettowohnfläche: 43.5 m<sup>2</sup>

## 4 EINZIMMER-APARTMENT

Nettowohnfläche: 36.8 m<sup>2</sup>



Masstab 1:100



VERMIETUNG APARTHOTEL  
LUZERN WEST

b\_smart selection  
Peter Ritsch  
E-mail: sales@b-smarts.net  
Mobile: +41 78 627 02 00