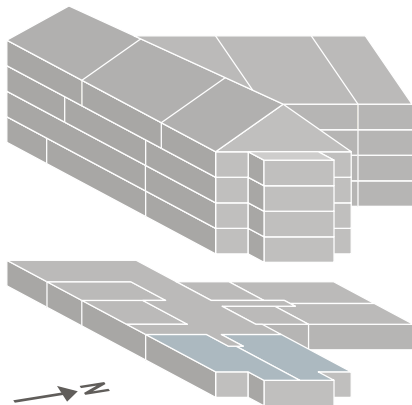
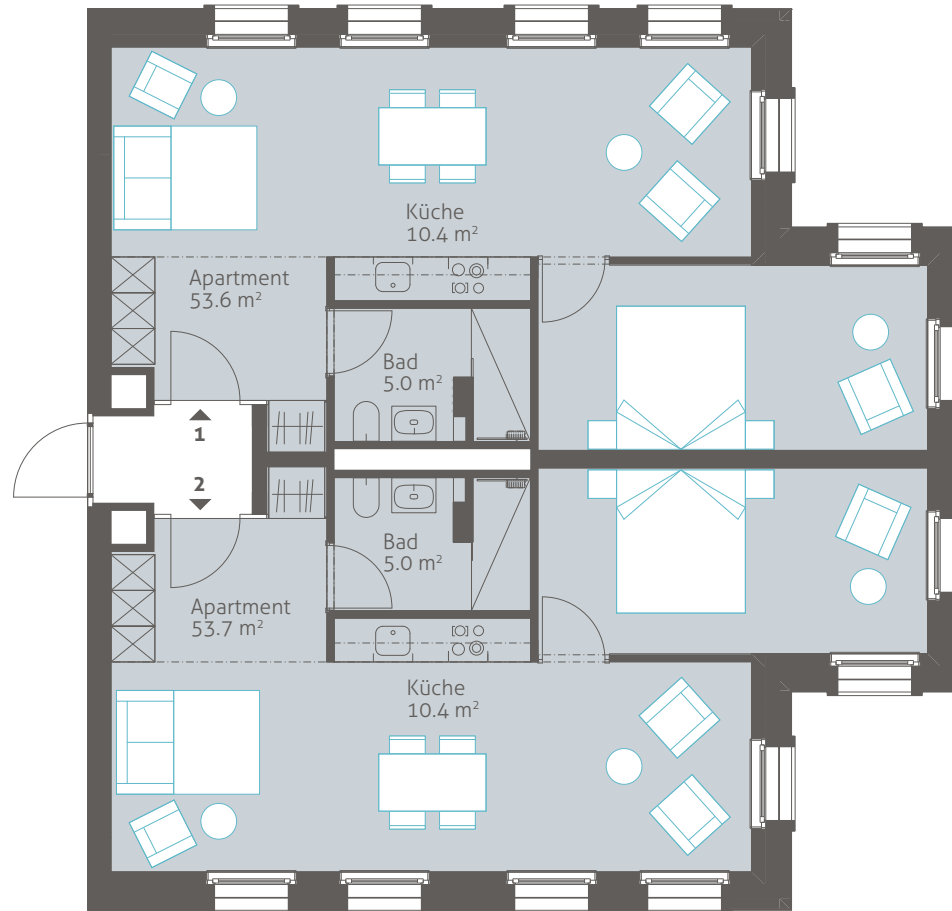


Erdgeschoss (Aparthotel)

1 | 2

ZWEIZIMMER-APARTMENT

Nettowohnfläche: 69.1 m²



Masstab 1:100



VERMIETUNG APARTHOTEL
LUZERN WEST

b_smart selection
Peter Ritsch
E-mail: sales@b-smarts.net
Mobile: +41 78 627 02 00

Erdgeschoss (Aparthotel)

5 | 8

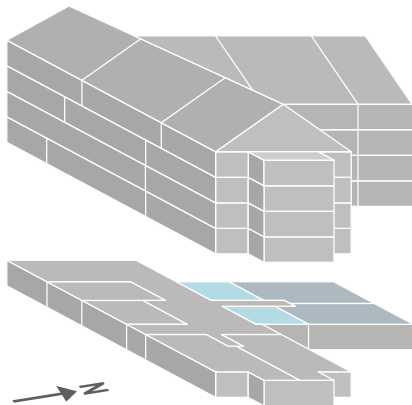
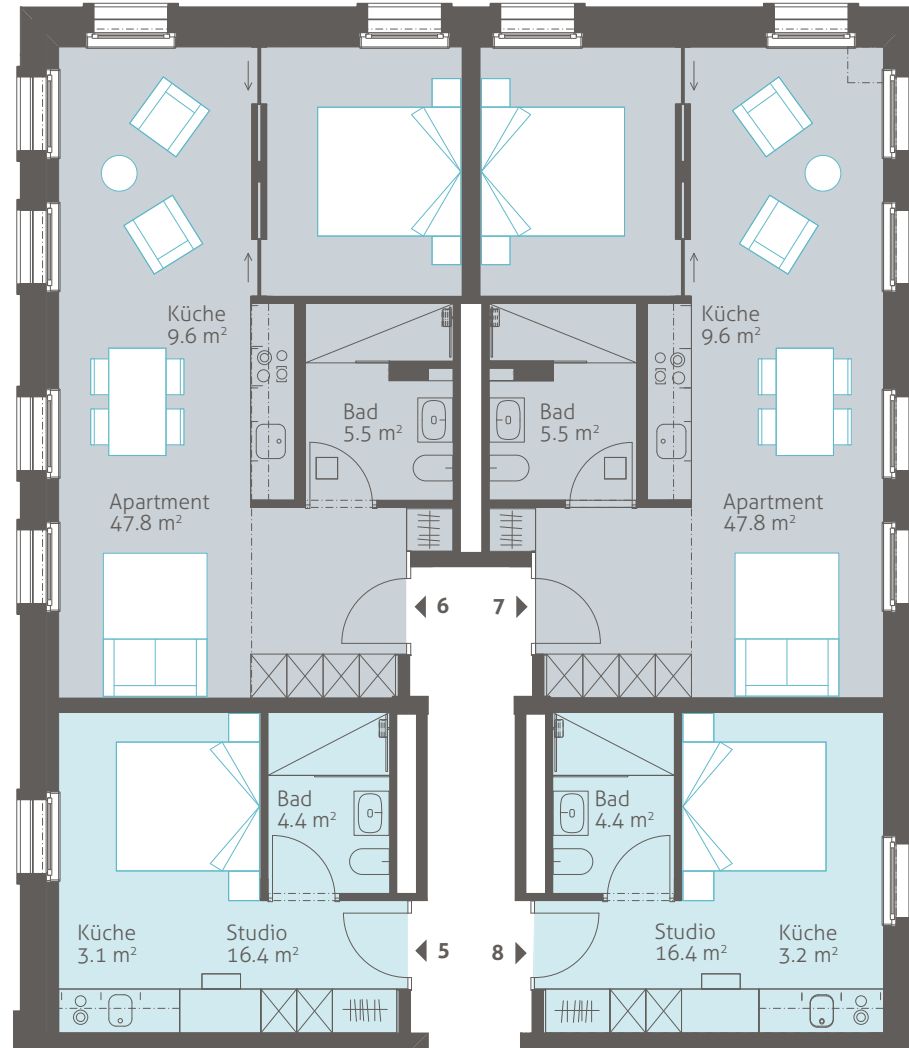
EINZIMMER-APARTMENT

Nettowohnfläche: 24.0 m²

6 | 7

ZWEIZIMMER-APARTMENT

Nettowohnfläche: 62.9 m²



Masstab 1:100



VERMIETUNG APARTHOTEL
LUZERN WEST

b_smart selection
Peter Ritsch
E-mail: sales@b-smarts.net
Mobile: +41 78 627 02 00